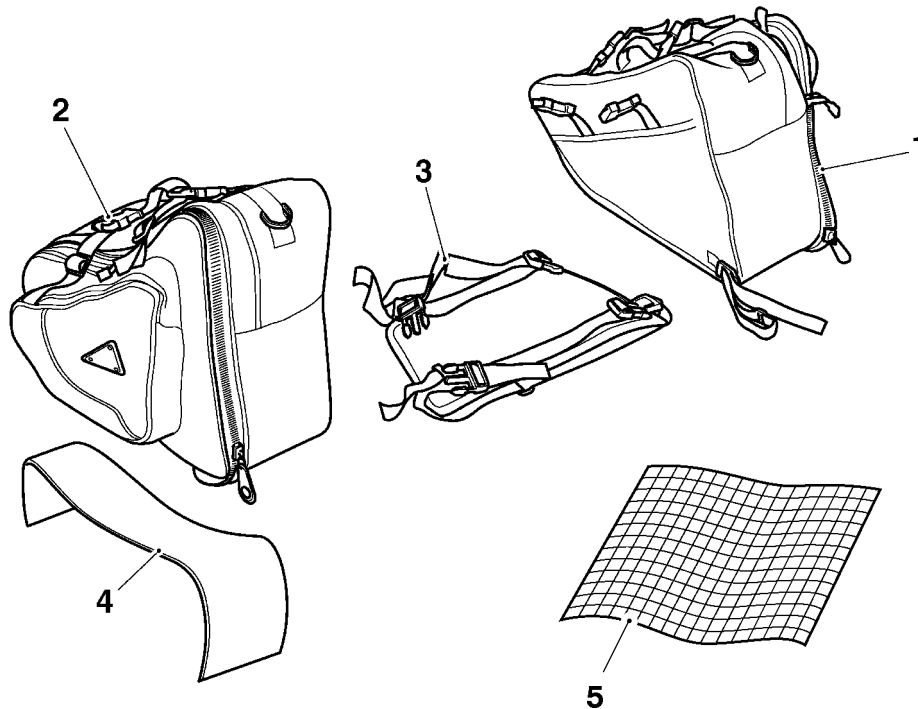


! **WARNING:** Always have Triumph approved parts, accessories and conversions fitted by a trained technician of an authorised Triumph Dealer. The fitment of parts, accessories and conversions by a technician who is not of an authorised Triumph dealer may affect the handling, stability or other aspects of the motorcycles operation which may result in an accident causing injury or death.

! **WARNING:** This soft luggage kit is designed for use on Triumph motorcycles only and should not be fitted to any other Triumph model or to any other manufacturers motorcycle. Fitting this soft luggage kit to any other Triumph model or to any other manufacturers motorcycle, may interfere with the rider and could affect the stability and handling of the motorcycle leading to an accident causing injury or death.



Parts Supplied:

- | | | | |
|--------------------------------------|---|---|---|
| 1. Left hand soft pannier | 1 | 4. Right hand pannier stiffener | 1 |
| 2. Right hand soft pannier | 1 | 5. Rubber blanket | 1 |
| 3. Centre panel | 1 | | |

*** Refer to current Triumph accessories brochure for details of model applicability.**

Publication part number A9900179 issue 1.

© Triumph Designs Ltd 2003

! WARNING: Ensure the motorcycle is stabilised and adequately supported, to prevent it from falling and causing damage or injury.

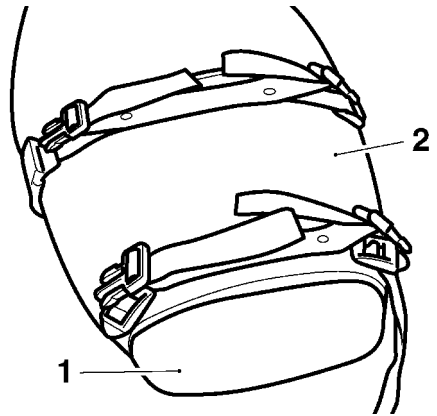
1. Unpack the right hand soft pannier, centre panel and stiffener from the left hand soft pannier.
2. Open the right hand soft pannier and undo the zip fastener to the compartment directly beneath the carrying handle.
3. Fit the stiffening panel as shown and close the zip fastener.



caiw

Fitting the stiffener to the right hand pannier

4. Fit the centre panel over the seat from the rear and tighten the securing straps underneath the seat.



caix

1. Seat
2. Centre panel

5. Ensure that the painted surface of the rear bodywork is clean. Cut the rubber blanket supplied with the kit to shape and secure to the motorcycle.

! CAUTION: Do not rely solely on the rubber blanket to protect the paintwork.

6. Clip on the left hand and right hand pannier using the four quick release fasteners on the centre panel.
7. Place the motorcycle on a paddock stand.
8. To retain the luggage, use the retaining straps and secure around the rear footrest hanger.

! WARNING: Ensure that the securing straps are positioned as instructed. Failure to secure the straps as instructed may impede movement of the rear wheel or suspension causing the motorcycle to become unstable leading to loss of control and an accident.

9. Adjust the straps as required.
10. Remove the paddock stand and place the motorcycle on its side stand.

! WARNING: The maximum safe load for each pannier is 3 Kg (6.6 lbs). Never exceed this loading limit as this may cause the motorcycle to become unstable leading to loss of control and an accident.

! WARNING: In all cases, loads must be evenly distributed on both sides of the motorcycle. Uneven loading may cause instability, loss of control and an accident.

! WARNING: After fitting the luggage system, operate the motorcycle in a safe area free from traffic to gain familiarity with the new handling characteristics. Operation when not familiar with the new characteristics of the motorcycle may result in an accident causing injury or death.



WARNING: Never ride in excess of 80mph on a motorcycle that is equipped with a Triumph luggage system. The presence of such a luggage system will affect the stability and handling of the motorcycle. Any such changes in stability may lead to loss of control and an accident.



WARNING: The motorcycle must not be operated above the legal road speed limit except in closed course conditions.